



The

January 2012

BUZZWORD

West Sound Beekeepers Association <http://www.westsoundbees.org/>
Proudly serving bees, their keepers, and the public in Kitsap County, WA

Refreshments



January 17, 2012 Meeting!

Queen Rearing

Methods and Goals for 2012
Presented By David Mackovjak
7 PM

Meeting Schedule:

Regular Meeting:
Tuesday Jan 17, 2012 7 PM

Bee-ginner Beekeeping
Classes Begin:
Tuesday Feb 21, 2012
6-6:45 PM

Regular Meeting follows:
7 PM

Bee-ginner Beekeeping
Session 2:
Saturday Feb 21, 2012
Noon

Queen Rearing Group
Meets after the Business
Meeting (March)

Meetings at Stedman's
Beekeeping Supplies in
Silverdale

What's inside:

Presidents Message.....	2
Christmas Dinner Highlights.....	3
Northwest Beekeeping Basics.....	4
WSBA Queen Rearing 2011.....	5
Flyer.....	13



Honning Jorgenson

WSBA's newest
beekeeper!

WSBA LOGO CONTEST

Get out the pencils
and paints and help
design the much
needed logo for
WSBA

[http://tinyurl.com/88ff
xrr](http://tinyurl.com/88ffxrr)

Message from the President:

Happy New year fellow beekeepers! I hope your 2012 shapes up nicely, and that our coming spring and summer weather permits a good year for bees, or at least better weather than last year.

From all the tales I have heard told, the annual WSBA dinner went off without a hitch, and that everyone enjoyed food, fellowship, some tall tales, and some good natured competition at our auction! I want to extend my thanks to all of those that helped plan and orchestrate the variety of activities this year. Kim, Brandy, David, Paul, and Darren among others, expertly produced an event that everyone enjoyed. We happened to be in the Hospital a scant mile away welcoming our third child (and second daughter) into the world. Her mother and I saw fit to name her "Honning" which is the Danish word for "Honey". Her family is deeply affectionate and connected to the wonderful honey bee and now she carries with her that legacy! So, while I am sorry I missed the dinner, I was otherwise occupied with a very blessed event. I hope to join you next year!

I would also like to remind everyone that this is January and as such begins our new year at WSBA. If you haven't renewed your dues yet, please bring them to the next meeting (January 17th) or fill out the form on our website and mail them in, and enjoy what the next year has in store for your association. This year, the association has committed to purchasing some additional equipment to aid our members in a number of different capacities, as well as maintaining and augmenting our already established programs in the apiary and the queen rearing group. Check out the new calendar at the WSBA website for details about upcoming class opportunities, lecture and presentation topics, as well as any special events. Also, if you are an apprentice interested in pursuing your journeyman certification, there are plenty of opportunities to begin the earning of necessary service points towards its completion. Please consider volunteering some of your time and expertise to WSBA and its membership. You will certainly feel rewarded and your time is extremely appreciated.

I hope to see all of you at the meeting this month! Your WSBA Vice President David Mackovjak will be discussing a topic near and dear to his heart, Queen Rearing. If you haven't had the opportunity to hear David speak, I encourage you to attend. Be sure to bring your legal pads as you will be certainly moved to take notes on the subject. For me, the ability to produce and to a certain extent control, queen production in my own apiary resulting in not having to rely upon commercially purchased non local queens, is at the top of my list for improvements to my management this year. You will not be disappointed!

TJ Jorgenson

President – WestSound Beekeepers Association

Membership Renewal Form: http://westsoundbees.org/wsba_membership_form_2012.pdf

Yes! I want to be a member of West Sound Beekeepers' Association during 2012.

I have enclosed a check payable to West Sound Beekeepers Association or hand delivering cash.
Check all boxes that apply:

- \$24 annual Bee household membership dues (New member)
- \$24 annual Bee household membership dues (Renewal)
- \$34 Bee-ginner class fee (\$24 membership dues + \$10 for OPTIONAL study guide)
- \$_____ Donation to Library Fund \$_____ Donation to Scholarship Fund

NAME(S):

MAILING ADDRESS:

PHONE:

EMAIL:

Please return to:

Selena Clements, WSBA Treasurer
3268 Chase Rd Port Orchard, WA 98366

WSBA Holiday Banquet, Auction, and Honey Taste Off

I just wanted to thank everyone who helped put together and attend WSBA Christmas party! We had a great turn out. A special thanks goes to Kim Redmond who coordinated a wonderful pot luck dinner at the Silverdale Community Center. The club put together under the direct help of Darren & Kim a wonderful gift basket for Barbra Stedman for all her support to WSBA. George Purkett was presented the WSBA Beekeeper of the Year for 2011, Christine Torres took 1st place in the honey competition and Paul Lundy was the great auctioneer who auctioned off numerous great gifts donated by members of WSBA. We raised an amazing \$700!! Thank you to all the club members who donated items for the auction and/or purchased the many wonderful donations. It was a great evening of friendship and fellowship! Many thanks to everyone who made this all possible by sharing some delicious dishes and desserts.



Great turn out for the WSBA Christmas party held at the Silverdale Community Center.



Congratulations to George, 2011 Bee Keeper of the Year!!



Paul Lundy, our energetic auctioneer who helped raise \$700!!



A special thanks to Kim Redmond who made all the table decorations.

David Macovjak
Vice President
360-340-0381

NORTHWEST BEEKEEPING BASICS

Adapted and modified from Ron Bennett

In January and February you should disturb the bees as little as possible. They will be in a tight cluster and you should not break their cluster.

Determine if hives need emergency feeding of sugar candy or dry sugar by lifting or weighing hives. Dry sugar or sugar candy is best because the bees can access it with minimum time away from the cluster and consume it directly. With syrup feed they must go to the feeder (breaking cluster and risking chilling themselves) and syrup has to be further evaporated for consumption by the bees. Continue to check for moisture on the inside of the outer cover. If you notice condensation make sure you increase hive ventilation by placing some pebbles or a twig between the inner and outer covers.



Watch the flight intensity on warm days to spot weak colonies. Also pay regular attention to the front of each hive looking for signs of disease. Deformed bees are a pointer to infestation by Varroa mites. Bees crawling on the ground without any deformations may be an indication of tracheal mite infestation.

In February, if you have determined that treatment for mites with miticide strips is warranted or acceptable, then carefully follow the directions that come with the product. You should start your treatments for Varroa mites by mid-February so that you have completed treatment BEFORE you put on your first honey super in March. Early supering will help gather the first honey flow of maple, and give your bees the space they need to help minimize swarming.

Store your unused brood comb in a cool dry place and protect from mice. Drawn comb is one of your most important assets. It takes your bees a lot of honey and pollen to generate a frame of wax. Check periodically for Wax Moth infestation! Now is the time to build frames and hive bodies.

Pay dues to your local bee association (send \$24 payable to West Sound Beekeepers Association c/o Selena Clements, WSBA Treasurer 3268 Chase Rd Port Orchard, WA 98366). The Association needs your support and we all benefit. http://westsoundbees.org/wsba_membership_form_2012.pdf

Order Package Bees. Packages are usually available in the first or second week of April, so you need to have your equipment ready and your packages ordered in time. In case of failing or poor queens one of the best management tools we beekeepers have is requeening, so, if deemed necessary, plan and order queens for April 2st delivery.

Keep your yard clean! Remove winter deadouts and salvage what you can. As you clean and store the equipment, think about why they died and act accordingly.

Keep entrances clear of dead bees. Dennis Heeney recommends taking a log piece of firm wire with a crook at the end and pulling debris from way back on the bottom board as well. It makes for a drier hive and allows the bees to get in and out of the hive when they need to.

Keep hives tilted slightly forward so water will run out, not in.

Order pollen supplement now so you'll have it when you need it next month!

Paul Hosticka once said "We can also stand under the filberts and listen to the buzz or happily watch as the girls boil out for a cleansing flight on a sunny afternoon. Be sure to smile, the sunshine is good for your teeth!"

WSBA Queen Rearing Group 2011 Year End Recap

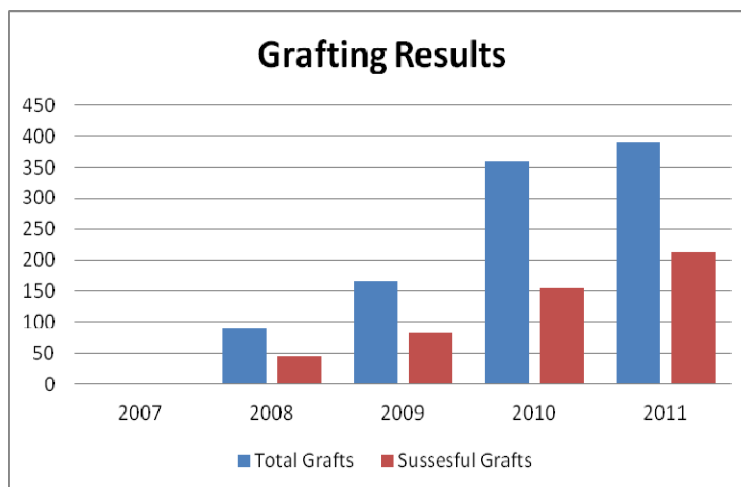


Queen cells drawn out

(December 2011)

Well it is the end of the calendar year and I thought it would be a great time to recap and review the progress of the WSBA Queen Rearing group. Periodically, it is always good to look in the rear view mirror and see where we started. Back in 2007 we began discussing the idea of a Queen Rearing group and established a focus group to determine the characteristics of a queen we would want here at WSBA to be able to perform well in the Pacific Northwest. We met several times but it wasn't until Jun 2008 that we held our first successful grafting session at Stedmans and we produced 15 quality queens. That was the start of something special and a new chapter for West Sound Beekeeping Association! We have come a long way since then as you will see.

Below is a chart of the number of grafts and potential queens produced over the last 4 years. It is interesting to note that we have grafted over 1,000 queen cells and our average success is 50%. The WSBA Queen Rearing group has produced over 500 local queens and nearly half of these local queens were produced this year, 2011!! This was just one of our many success stories this year.



In March, we met and outlined the purpose and goals for this year. This provided us our road map for the year. The purpose of the WSBA Queen Rearing Group was "to provide an opportunity for members of WSBA a venue to learn and explore the art of queen rearing and produce quality queens." I believe we accomplished our goal.

We had a great 2011 season even though the cool wet weather caused our queen drafting to be delayed by a month and we didn't graft until May. We produced over 213 queen cells and provided training instruction to over 65 members. There were over 30 members who participated in the WSBA Queen Rearing Group, our largest ever.

Goals: To review our accomplishments, let's recap our goals for 2011.

1. **Explore and document different physical methods of queen rearing -**

Accomplished – In 2011 the Queen Rearing Group met following the business meeting the first Tues of the month. The following lecture series were provided:

- 5 Apr – Drone Management – Jim Carlson
- 3 May – Cloake Board and grafting – David Mackovjak
- 7 Jun – Instrumental Insemination – George Purkett
- 5 Jul -- Hygienic Testing – Paul Lundy

Additionally, there were four grafting sessions held at Stedmans on 5/8/11, 6/12/11, 7/17/11, & 7/31/11. These sessions gave the club members hands on opportunities to try different grafting tools and to actually graft larva to create new queens. Additionally, a number of different skills sets were presented and worked. These included queen cage building, wax cell making, cloake board manipulation, nuc making, splits, queen marking, etc.

Some of these activities are shown below:



James experimenting with different grafting tools



Jim preparing a row of grafts



George demonstrating how to make wax queen cups a queen



Jean showing proper technique to pick up a queen



Melissa marking her first queen



Suzanne proudly showing off her marked queen

2. Educate both the Queen Rearing group and the WSBA on queen rearing

Accomplished – on 15Mar, David Mackovjak presented Queen Rearing 101 to the beginner beekeepers class. This was an introduction into the art and science of queen rearing. At the regular meeting, David then presented Queen Rearing 201 – “How a Small Beekeeper Can Raise High Quality Queens.” This presentation went into detail on the use of the Cloake Board and grafting. All members were encouraged to maintain a couple extra queens during the season.



3. Provide quality queens to the Queen Rearing group and WSBA.

Accomplished – This summer we grafted nearly 400 times, producing 213 queen cells. The queen rearing group has been selling queen cells for \$4 and mated queens for \$15. In Aug, we had over 20 excellent laying queens in nucs. Additionally, we have been partnering w/ WSU queen rearing program in which they send us quality queens for the PACNW. We received two queens in September. We intend to over winter them and verify their performance. If they are laying well, we will use them in our 2012 Spring grafting events.





WSBA Queen Rearers w/ a new batch of queen cells caged.

4. Investigate and conduct hygienic testing

Accomplished – In July, Paul Lundy provided hygienic training to the Queen Rearing group and then gave a number of demonstrations during the Advance Beekeeping Course.



5. Explore drone management methods

Accomplished – Jim Carlson gave an informative presentation to the group on drone management in April. This will become very important as we move towards instrumental insemination and we will need a large supply of quality drones to work with. We still have a lot to learn in this area.

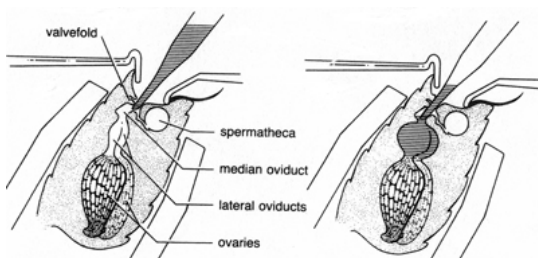
6. Invite at least two other local beekeeping associations to our meetings

Accomplished – We did have several different club members attend both our training sessions as well as our Sunday grafting sessions. Additionally, last month I was the guest speaker at East Jefferson Beekeepers Association (EJBees) in Port Hadlock and gave the presentation Queen Rearing 201 – “How a Small Beekeeper Can Raise High Quality Queens.”



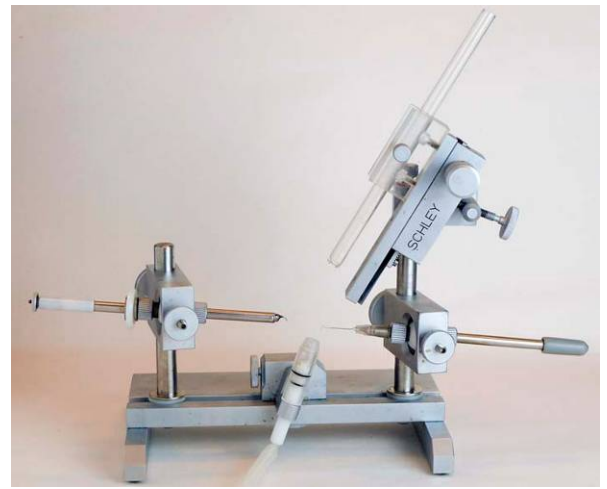
7. Instrumentally inseminate a queen (stretch goal)

Not Accomplished – We did not use instrumental insemination in our queen rearing program this year (Next year). But we did make progress...



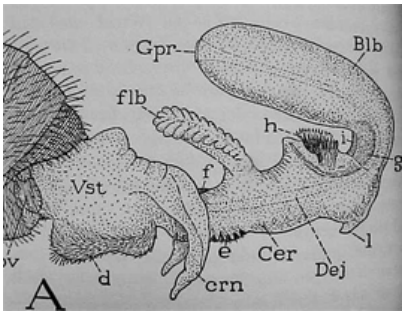
George Purkett attended Sue Cobey's insemination training at UC David in the spring and provided a very informative presentation to both the Queen Rearing group as well as a guest speaker at the WSBA general meeting.

Additionally the club purchased the Schley insemination tool and a Harbo Syringe. These both were on display during the November meeting. We are looking forward to begin using the equipment next spring for our first opportunity to try to instrumentally inseminate a queen. We will looking to instrumental inseminate 50 queens to be sacrificed for checking the spermatheca. We will keep track of successes and failures. If success rate is low, keep practicing. As I've mentioned before practice, practice, practice makes perfect.



Lecture series: During the year, the queen rearing group had an informative lecture series, providing some super presentations to the group and WSBA.

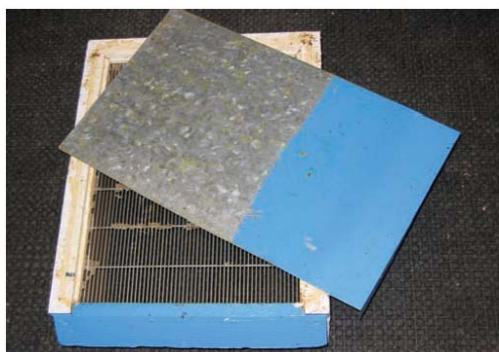
1. April's lecture series kicked off by Jim Carlson's presentation of Drone Management. It was an informative and interesting presentation on the anatomy of drones and why they are so important in any queen rearing operation. This is a very easy factor to over look when you consider for each virgin queen there needs to be aprox 50+ drones available so she is able to mate with 10 to 20 drones.



2. In May, David Mackovjak taught the Doolittle method of grafting and the use of the Cloake Board method.

In 1979, Susan Colby first published a paper on the Cloake Board Method in American Bee Journal. She stated "The Cloake Board Method takes advantage of both a queen-less and queen-right system. Queen cells started in a queen-less state tend to have a higher rate of acceptance, and those reared in a queen-right state tend to produce higher quality cells. Hence, the popularity of the starter and finisher methods used." The WSBA Queen Rearing group used this method exclusively for raising queens.

A Cloake Board allows a single queen-right colony to serve easily as both a starter and finisher cell building colony. It is essentially a queen excluder with a sliding solid divider. It allows for quick and easy separation of the top and bottom hive boxes.



Cloake Division Board with Queen Excluder and Slide



WSBA Apiary hive w/ Cloake Board system
(9)

The key to successful queen rearing and developing good queens were:

1. Be From a Queen Mother of Superior Genetic Stock
2. Receive Good Care as a Larva and as a Pupa
3. Must Successfully Mate With Multiple Drones of Good Stock
4. Must Be Disease and Pest Free
5. She Must Be Successfully Introduced into Her New Colony



3. June we were fortunate to have George Purkett who provided a lecture on Instrumental Insemination. George presented a slide show of the April 20-21 advanced workshop on queen insemination course from the UC David taught by Susan Cobey. The course was a practical hands-on approach providing detailed instruction and hands-on practice of semen collection and insemination of queens. Various types of insemination instruments are

displayed and reviewed. The preparation and care of virgin queens and drones was presented. Basic bee genetics and various breeding systems were reviewed. George had a great slide show and answered lots of great questions that evening.

4. The July's training was given by Paul Lundy on Hygienic testing using liquid nitrogen.

We learned hygienic behavior is a genetic trait of honey bees. It is the main defense against American foulbrood and chalkbrood, and is one defense against varroa mites. Testing for this trait is simple. It involves freezing a section of sealed pupae and recording how many dead pupae the bees remove within 24 hours.

There are two methods to perform this test. One is the freezer-killed brood test (FKB). The other is the liquid nitrogen killed brood test (LNKB). With either method use 3 - 10 day old pupae (just pupating to light tan color).

The idea being we freeze the brood and put the frame back in the hive and then count the cells with dead pupae that are still not cleaned out. The colony is hygienic if it completely removed at least 95% of the frozen pupae within 24 hours.

In queen rearing, if you want to breed bees for hygienic behavior, it is very important to first select colonies with desirable traits, such as high honey production, gentleness, good wintering ability and queen longevity. Test only the best of these colonies for hygienic behavior.



5. The culmination of the training series was the Advanced Beekeeping Course that was held on 9 Jul. This course was designed for seasoned beekeepers and for people that have already taken the Basics Beekeeping course and need a refresher course. This was the first time that WSBA has offered an Advanced Beekeeping course (in recent memory anyways!) The class was well received and we had 22 excited students registered at ready to start at 0830. This program was designed to provide classroom instruction in the morning followed by hands on application in the afternoon with all the students working in the club's apiary. We had a top notch set of instructors to include: Paul Lundy, George Purkett, Kim Redman, Darren Gordon, & David Mackovjak. They were all knowledgeable and insightful and were interested in making sure the key points were delivered. The goals of the course were: **(10)**

1. Bee a better Beekeeper in the PACNW
2. Hands On Training
3. Beekeeping is challenging but rewarding and fun!!



Paul answering questions on Varroa Mites.

Kim explaining how to market your honey



Hive inspections

Varroa mites on a drone pupa

The Adv Beekeeping Course raised over \$1,000 which went to the Queen Rearing Group for purchasing their new equipment.

Well that's a quick recap of what the WSBA Queen Rearing group accomplished in 2011. Pretty impressive!! For 2012, we are already planning on another great year. We are looking forward to using our new Schley insemination tool and begin learning how to instrumentally inseminating queens and for the first time ever, we are planning and organizing a 2 Day Advanced Queen Rearing course on 14-15 July. Mark your calendars now since seating will be limited.



At the beginning of this article I stated the purpose of the WSBA Queen Rearing Group was "to provide an opportunity for members of WSBA a venue to learn and explore the art of queen rearing and produce quality queens." I hope you will agree that we have accomplished our goal for 2011!!

In closing, if you haven't taken the opportunity to come out and see what we are about; I would encourage you to stop by one of our meeting or practical sessions. I assure you; it will make you a better bee keeper!

David Mackovjak
 Queen Rearing group leader
trimack@prodigy.net
 360-340-0381





Stedman's Bee Supplies

3763 NW Anderson Hill Rd
Silverdale, WA 98383

(360) 692-9453

Stedman's has
All Kinds of Beekeeping equipment,
Package Bees,
Honey,
And a fine
Gift Shop!

Come on by!

Promote Beekeeping and Help New Beekeepers Off to A Good Start!

I urge all members to post the following flyer or a copy of it, or several copies, in places where it can be seen by the public at large. This will help bees, beekeepers, potential beekeepers and beekeeping in general. Beekeeping classes make a great gift!

Please be sure to cut in between the tear-off information stubs so people will feel encouraged to take them!

Thank-you,

The editor

(12)

